

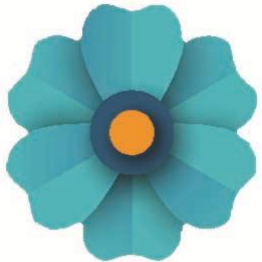
A vibrant graphic for Spring Camps 2026. The background is a gradient of green, with various colorful paper-cut flowers and leaves scattered across it. The flowers include red, blue, yellow, orange, and white, each with a distinct center. The leaves are in shades of green, some with detailed vein patterns. The overall style is clean and modern, with a slight drop shadow effect on the floral elements.

SPRING CAMPS 2026

FOR CHILDREN AGED FROM 3 TO 11

Week 1: Monday, April 20th to Friday, April 24th

Week 2: Monday, April 27th to Thursday, April 30th



CAMPS LOCATION

ÊTRE ET DECOUVRIR

Montessori school
13 Bis Rue Lecoq
78860 Saint-Nom-la-
Bretèche





WELCOME TO WONDERLAND



Week 1: Monday, April 20th to Friday, April 24th

Threatre : 6 to 11 years old

Arts and craft : 3 to 5 years old



6 TO 11
YEARS OLD

WELCOME TO WONDERLAND

5 DAY MUSICAL THEATRE CAMP



Rhian

Jump down the rabbit hole... and onto the stage!

Follow Alice as she tumbles into a curious world where nothing is quite as it seems...

Throughout the week, children will:

Act, dance, sing, and tell stories

Bring quirky Wonderland characters to life

Build confidence, creativity, and teamwork

Led by Rhian, our English theatre director and educator, the camp guides kids through creating their own show—from first ideas to performance.

Final highlight: a Friday performance where children present their own mini version of the story, with costumes, props, and music.



3 TO 5
YEARS OLD

WELCOME TO WONDERLAND

5 DAY CREATIVE CAMP

Our younger participants will enjoy a week full of themed activities inspired by Wonderland, including:

Creative arts and crafts

Fun games and sports

Storytelling and imaginative play



They will also take part in at least **one musical scene of the final show on Friday** sharing the stage with the older children—an unforgettable moment to build confidence and feel part of the adventure!

Because in Wonderland, the impossible becomes possible and every child gets to shine!



A collage of illustrations. On the left, a woman in a black hat and coat (Mary Poppins) is shown in profile. In the center, a young boy in a suit and hat is shown in profile. Above him, a bird is flying. In the bottom left corner, a tiger's head is visible. The background is a mix of yellow and green tones with some abstract shapes.

MARY POPPINS MEETS MOWGLI & PETER PAN

Week 2: Monday, April 27th to Thursday, April 30th

Threatre : 6 to 11 years old

Arts and craft : 3 to 5 years old



6 TO 11
YEARS OLD

MARY POPPINS AND FRIENDS

5 DAY THEATRE CAMP



Yassin

Step into a world where imagination knows no limits...

One windy London morning, Mary Poppins arrives with her magical umbrella, only this time, something unexpected happens. A mysterious gust of wind carries her far beyond Cherry Tree Lane and there begins an incredible adventure !

Across 5 enchanting scenes and 4 joyful songs, children will:

Travel from London to the jungle and all the way to Neverland

Discover friendship and the power of imagination

Learn to express themselves through music, movement, and storytelling

Led by Yassin, our theatre teacher, children will be guided step by step through this creative journey—building confidence, stage presence, and teamwork in a fun and supportive environment.



3 TO 5
YEARS OLD

MARY POPPINS AND FRIENDS

5 DAY CREATIVE CAMP

Our younger participants will enjoy a week full of themed activities inspired by this magical adventure, including:

Creative arts and crafts

Fun games and sports

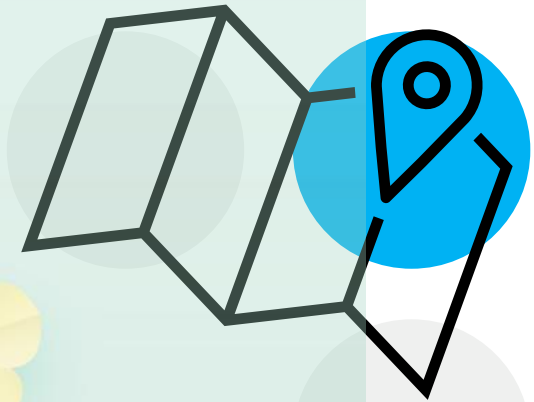
Storytelling and imaginative play

They will also take part in at least **one musical scene of the final show**, joining the older children on stage for a special shared moment full of joy and confidence!



SAME

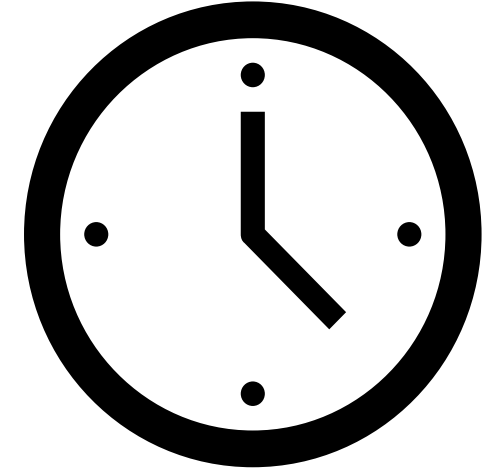




PRACTICAL INFORMATION



CAMP SCHEDULE



GARDERIE MORNING*	CAMP START	CAMP FINISH	GARDERIE AFTERNOON*
9:30 to 10:00	10:00	16:00	16:00 to 16:30

If late please reach the following numbers : 06.21.58.96.58 or 06.25.91.88.78

* Garderie fees : 5 euros/session – 10 euros for both morning and afternoon per day

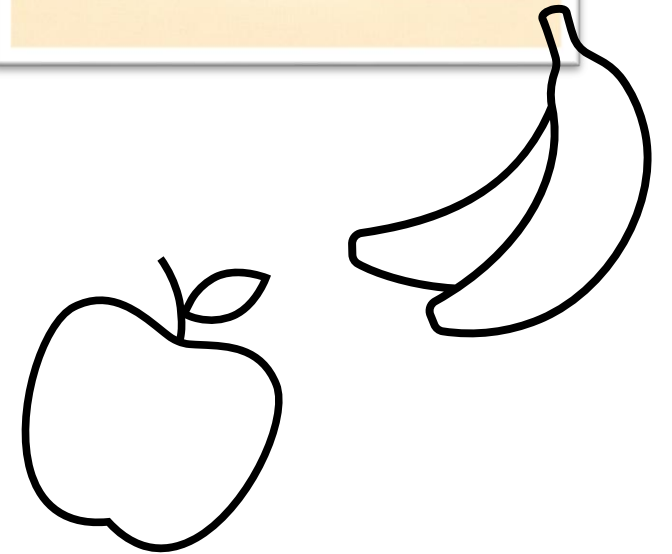
MEALS

LUNCH BREAK

12:00 to 13:00

Please provide a **labelled lunchbox** and **water bottle** for your children.

At SAME Club, we keep your kids' lunches fresh in the fridge and warm them up at mealtime.



PRICE

WEEK 1


5 Full Days (10h-16h)—375€ for 1 child and 335€ for all following children

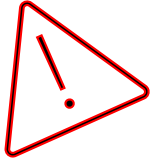
WEEK 2

4 Full Days (10h-16h)—300€ for 1 child and 270€ for all following children

You may register your child(ren) for less than 4 or 5 days , but the registration fee will remain the price of a full week

Booking requests : contact@sameclub.fr

 06.21.58.96.58



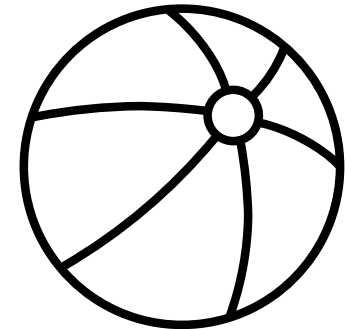
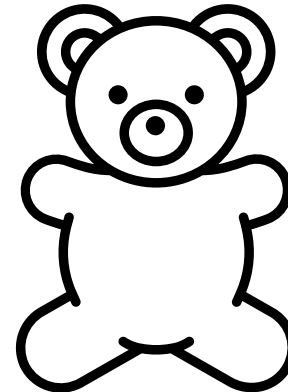
PERSONAL ITEMS

ARTISTS AT WORK: Our Holiday Camps are a blast and bound to get a little messy with paint splatters sometimes. Please Dress your children in play clothes that can take a few "artistic" stains!

LABELS : To ensure every beloved items find their way back home, please label your children's belongings.

WOOPS HAPPEN: for children in the 3-5 age group, please provide your children with an extra set of clothes, just in case.

TOYS : Children all have their favorite toys that they like to bring along but we **strongly recommend the personal toys stay home to avoid any unfortunate loss.** We have plenty of wonderful toys on site.



HEALTH MATTERS

SLIPPERS: Inside the camp's premises, we ask the children to remove and store their shoes, for their better comfort, we advise that they wear slippers (labelled)

BLESS YOU: If your child is not feeling well, we kindly ask that you keep them warm at home until they feel better.

ALLERGIES : Please advise us of any restriction your child might have as we provide the snacks during camp.

HANDS WASHING: We make sure your children always keep their hands as clean as can be (even after epic art crafting!)



SEE YOU SOON

We look forward to welcoming
your children at SAME Club!



Thank you